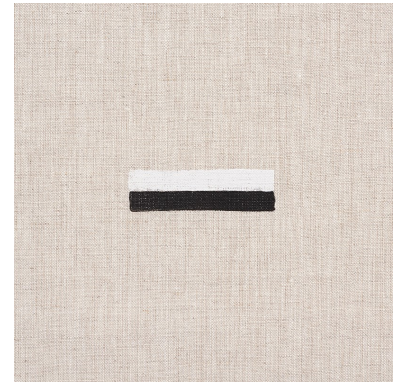
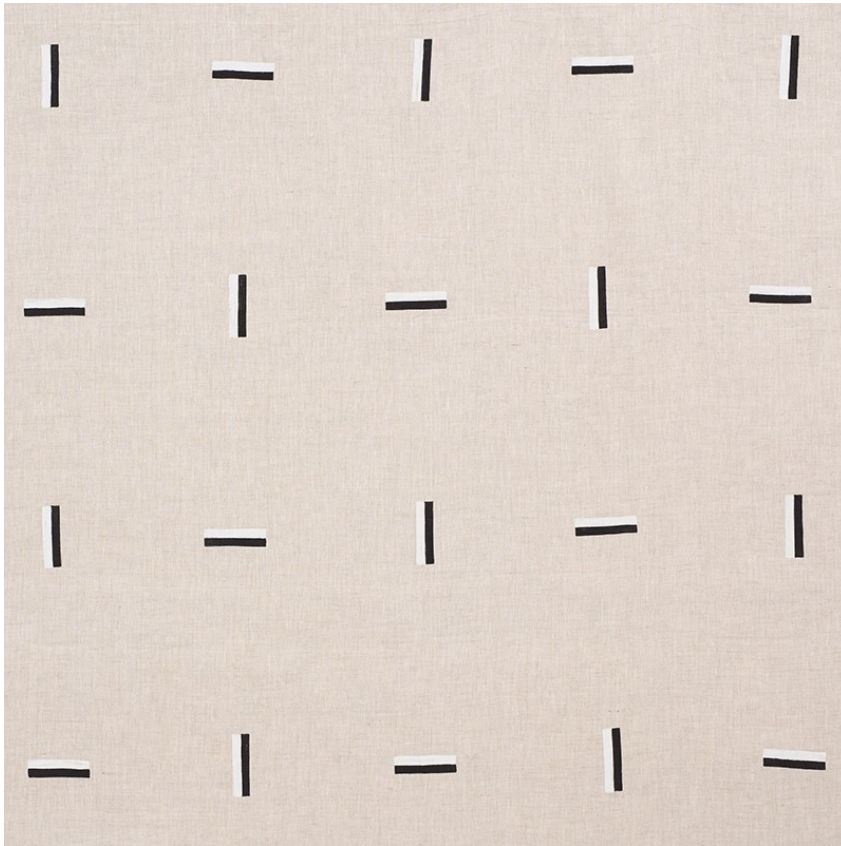


177911

ICEHOUSE

COLOR: BLACK & WHITE TYPE: FABRIC



WHAT MAKES THIS SPECIAL

Inspired by a picturesque pond on Martha's Vineyard, this hand-blocked Caroline Z Hurley design is a true work of art, created by artisans in New Bedford, Massachusetts.

To check stock and price, request a physical memo, reserve or place an order, sign in to your account on www.fschumacher.com or our iOS app, or give us a call at **1-800-673-4221**

WIDTH
58 1/2" (149CM)

VERTICAL REPEAT
18 3/4" (48CM)

CONTENT
100% LINEN

LIGHT FASTNESS
N/A

HORIZONTAL REPEAT
16" (41CM)

MATCH
STRAIGHT

PERFORMANCE
N/A

COUNTRY OF FINISH
UNITED STATES OF
AMERICA

SCHUMACHER

FABRIC WALLPAPER TRIM FURNITURE CUSTOM/CONTRACT
RUGS AND CARPETS AVAILABLE AT PATTERSONFLYNNMARTIN.COM