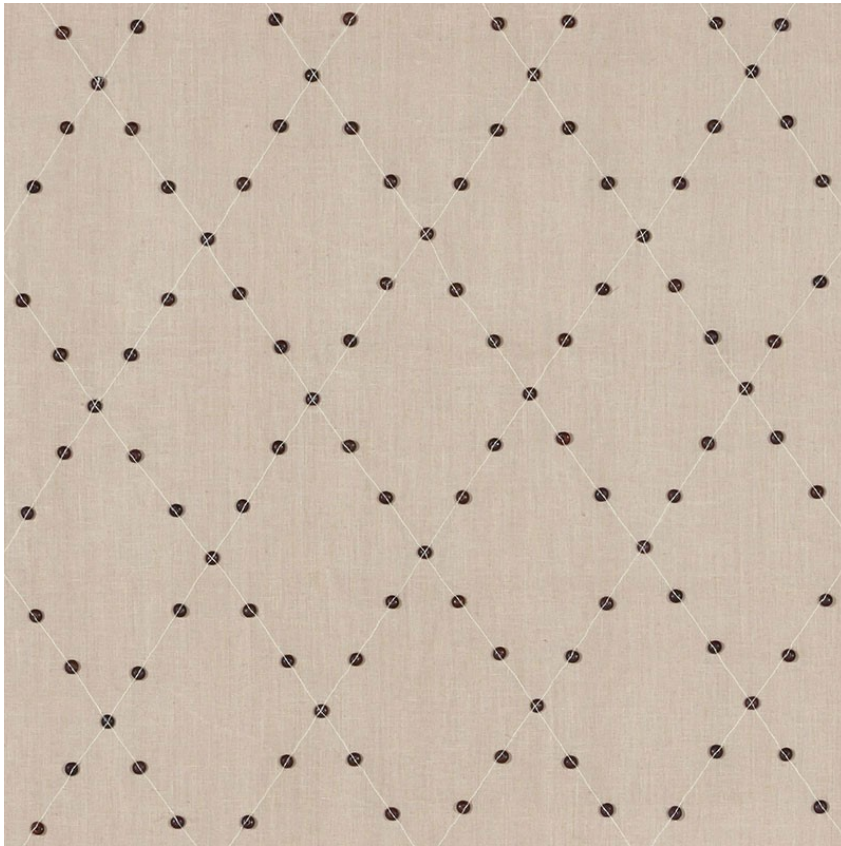


69081

SAMOA DIAMOND

COLOR: SEA OYSTER TYPE: FABRIC



**WHAT MAKES THIS SPECIAL**

Perfect for curtains or shades, this embellished linen has diamond-patterned stitching dotted with natural wood buttons that add a couture note to a scheme.

To check stock and price, request a physical memo, reserve or place an order, sign in to your account on [www.fschumacher.com](http://www.fschumacher.com) or our iOS app, or give us a call at **1-800-673-4221**

**WIDTH**  
53 1/2" (136CM)

**VERTICAL REPEAT**  
8 1/2" (22CM)

**CONTENT**  
75% LINEN, 22%  
WOODEN BEADS, 3%  
SPUN COTTON

**LIGHT FASTNESS**  
40 HOURS

**HORIZONTAL REPEAT**  
6" (15CM)

**MATCH**  
STRAIGHT

**PERFORMANCE**  
N/A

**COUNTRY OF FINISH**  
INDIA

**SCHUMACHER**

FABRIC WALLPAPER TRIM FURNITURE CUSTOM/CONTRACT  
RUGS AND CARPETS AVAILABLE AT [PATTERSONFLYNNMARTIN.COM](http://PATTERSONFLYNNMARTIN.COM)