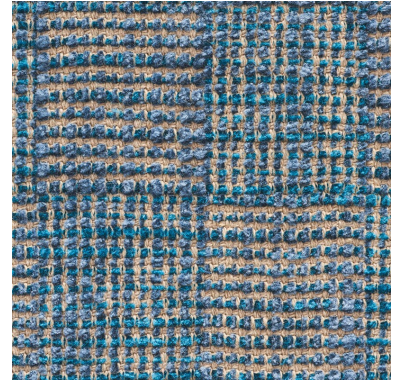
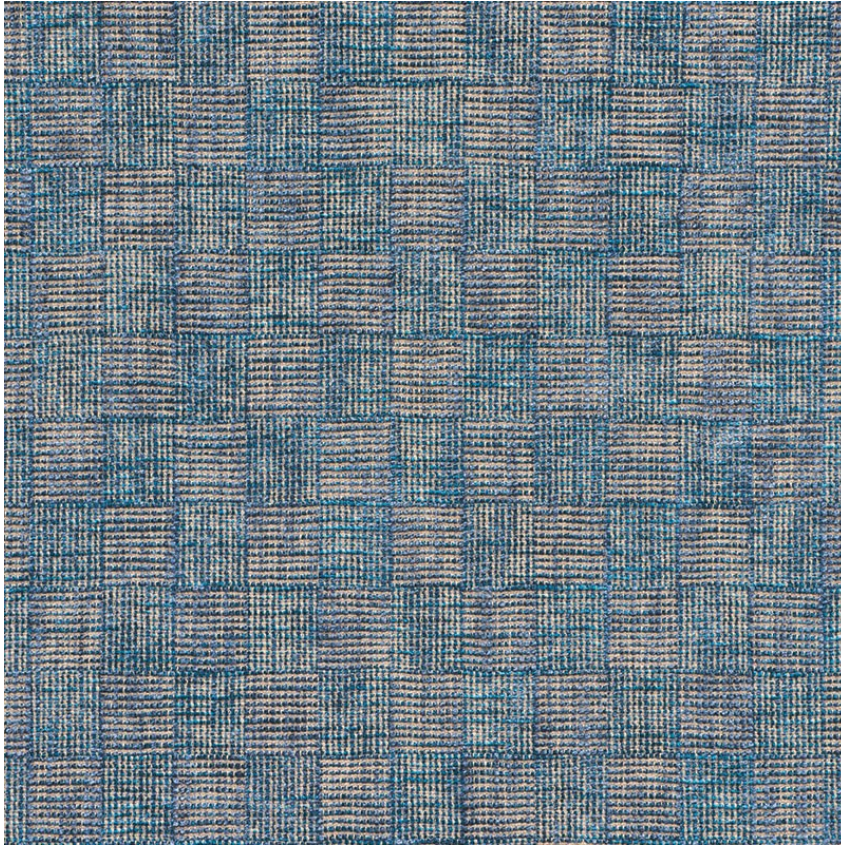


72480

YUMA

COLOR: CADET TYPE: FABRIC



WHAT MAKES THIS SPECIAL

A beautiful, tonal basketweave, Yuma has depth, nuance and sophistication. Chenille yarns account for its undeniable softness.

To check stock and price, request a physical memo, reserve or place an order, sign in to your account on www.fschumacher.com or our iOS app, or give us a call at 1-800-673-4221

WIDTH
56 1/2" (144CM)

VERTICAL REPEAT
3 1/2" (9CM)

CONTENT
57% COTTON, 43%
VISCOSE

LIGHT FASTNESS
40 HOURS

HORIZONTAL REPEAT
3" (8CM)

MATCH
STRAIGHT

PERFORMANCE
MARTINDALE 40,000

COUNTRY OF FINISH
ITALY

SCHUMACHER

FABRIC WALLPAPER TRIM FURNITURE CUSTOM/CONTRACT
RUGS AND CARPETS AVAILABLE AT PATTERSONFLYNNMARTIN.COM