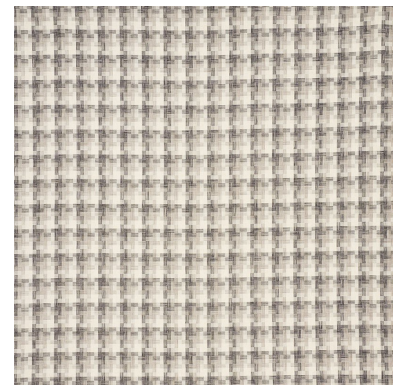


73741

BORO PLAID

COLOR: CHARCOAL TYPE: FABRIC



WHAT MAKES THIS SPECIAL

Hand-dyed yarns give this handsome basketweave an irregular, artisanal look. A luxe linen blend with wonderful texture and depth, it is a versatile option for upholstery.

To check stock and price, request a physical memo, reserve or place an order, sign in to your account on www.fschumacher.com or our iOS app, or give us a call at **1-800-673-4221**

WIDTH
55 1/2" (141CM)

VERTICAL REPEAT
7" (18CM)

CONTENT
64% POLYESTER, 18%
COTTON, 9% VISCOSE,
9% LINEN

LIGHT FASTNESS
N/A

HORIZONTAL REPEAT
6 1/8" (16CM)

MATCH
STRAIGHT

PERFORMANCE
WYZENBEEK 15,000

COUNTRY OF FINISH
INDIA

SCHUMACHER

FABRIC WALLPAPER TRIM FURNITURE CUSTOM/CONTRACT
RUGS AND CARPETS AVAILABLE AT PATTERSONFLYNNMARTIN.COM