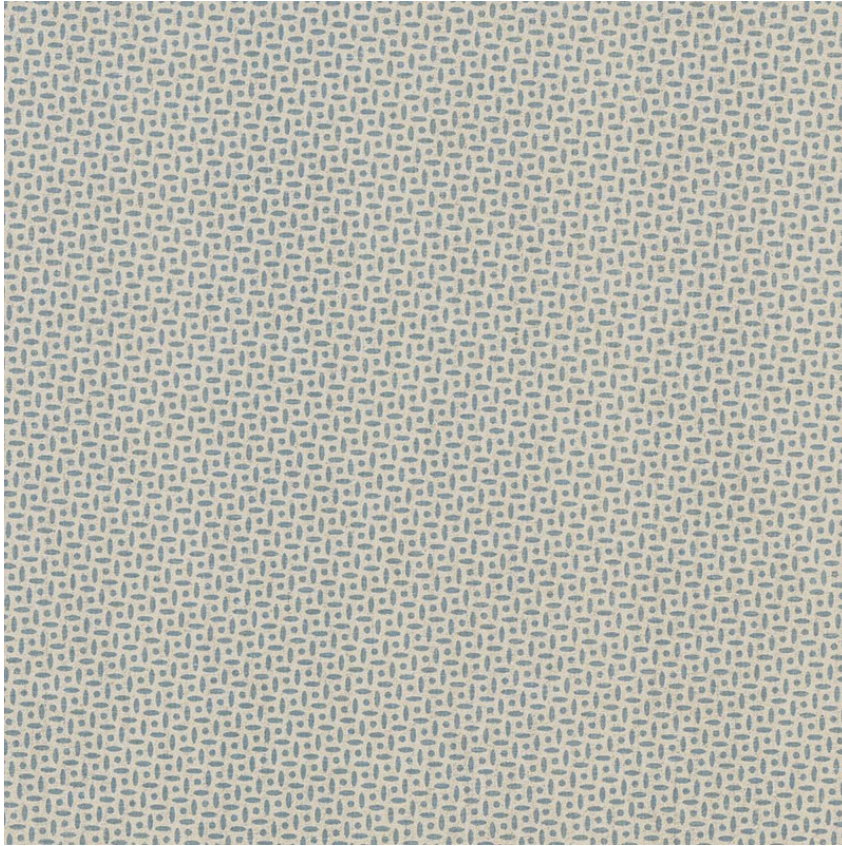


BERRO01

BERRYDOWN

COLOR: BLUE TYPE: FABRIC



WHAT MAKES THIS SPECIAL

Berrydown is a small-scale print with versatility. Woven in England, the natural linen ground gives this hand-blocked pattern depth and warmth. Also available as a wallcovering.

To check stock and price, request a physical memo, reserve or place an order, sign in to your account on www.fschumacher.com or our iOS app, or give us a call at **1-800-673-4221**

WIDTH

53" (135CM)

VERTICAL REPEAT

2" (5CM)

CONTENT

100% LINEN

LIGHT FASTNESS

N/A

HORIZONTAL REPEAT

2" (5CM)

MATCH

STRAIGHT

PERFORMANCE

MARTINDALE 18,000

COUNTRY OF FINISH

UNITED KINGDOM

SCHUMACHER

FABRIC WALLPAPER TRIM FURNITURE CUSTOM/CONTRACT
RUGS AND CARPETS AVAILABLE AT PATTERSONFLYNNMARTIN.COM