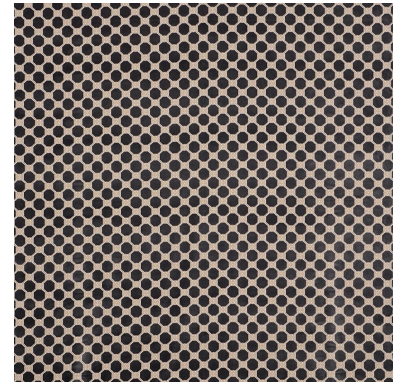
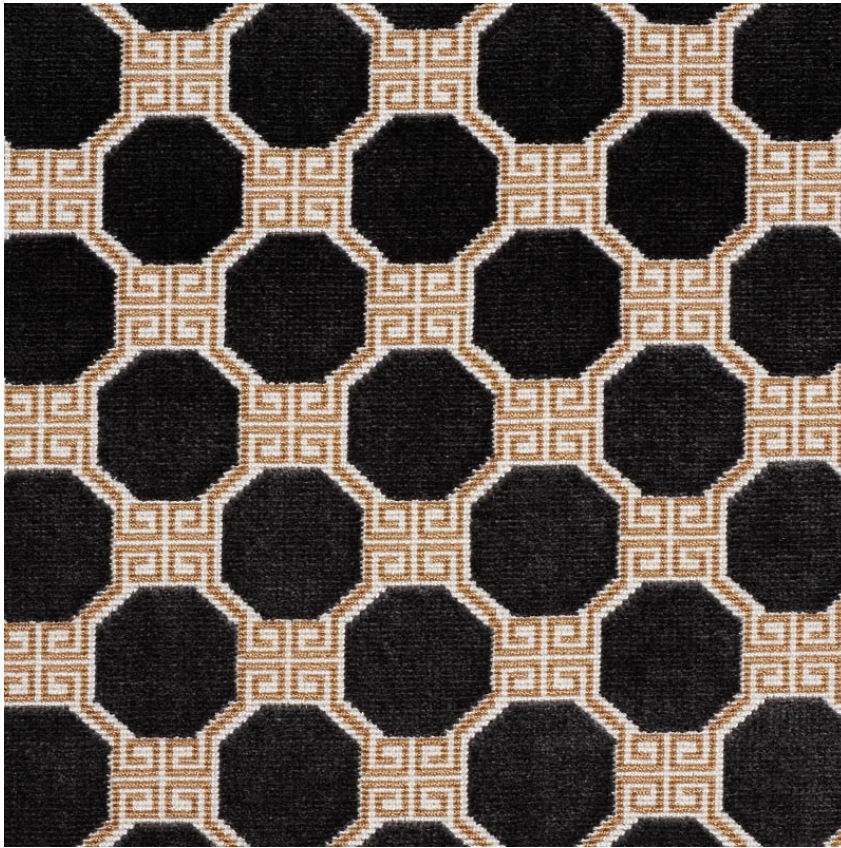


72795

OCTAVIA VELVET

COLOR: ONYX TYPE: FABRIC



#### WHAT MAKES THIS SPECIAL

Woven in Belgium on traditional looms, this extraordinary velvet has a dense loop and pile construction. Its mid-sized Greek key lattice pattern is graphic and elegant.

To check stock and price, request a physical memo, reserve or place an order, sign in to your account on [www.fschumacher.com](http://www.fschumacher.com) or our iOS app, or give us a call at **1-800-673-4221**

WIDTH  
53" (135CM)

VERTICAL REPEAT  
2 1/2" (6CM)

CONTENT  
69% VISCOSE, 23%  
COTTON, 8% POLYESTER

LIGHT FASTNESS  
N/A

HORIZONTAL REPEAT  
2 1/2" (6CM)

MATCH  
STRAIGHT

PERFORMANCE  
MARTINDALE 18,000

COUNTRY OF FINISH  
BELGIUM

## SCHUMACHER

FABRIC WALLPAPER TRIM FURNITURE CUSTOM/CONTRACT  
RUGS AND CARPETS AVAILABLE AT [PATTERSONFLYNNMARTIN.COM](http://PATTERSONFLYNNMARTIN.COM)