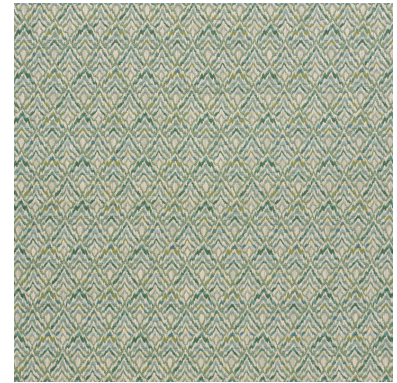


76142

HALCYON

COLOR: MEADOW TYPE: FABRIC



#### WHAT MAKES THIS SPECIAL

Inspired by a classic bargello motif, Halcyon is a complicated, textural weave of chunky weft yarns on a multicolored warp. The pattern is railroaded to suit large pieces.

To check stock and price, request a physical memo, reserve or place an order, sign in to your account on [www.fschumacher.com](http://www.fschumacher.com) or our iOS app, or give us a call at **1-800-673-4221**

#### WIDTH

56 3/4" (144CM)

#### VERTICAL REPEAT

2 1/2" (6CM)

#### CONTENT

73% COTTON, 23%  
VISCOSE, 4% POLYAMID

#### LIGHT FASTNESS

N/A

#### HORIZONTAL REPEAT

3 1/4" (8CM)

#### MATCH

STRAIGHT - SHOWN AS  
RAILROADED

#### PERFORMANCE

MARTINDALE 14,000

#### COUNTRY OF FINISH

FRANCE

# SCHUMACHER

FABRIC WALLPAPER TRIM FURNITURE CUSTOM/CONTRACT  
RUGS AND CARPETS AVAILABLE AT [PATTERSONFLYNNMARTIN.COM](http://PATTERSONFLYNNMARTIN.COM)